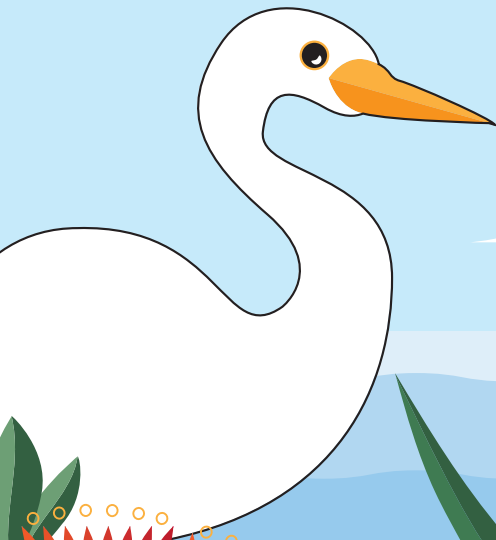


CQ'S PAPERS
AND THE
ENVIRONMENT,
MADE EASY.



PRODUCT NAME	FEATURES
Sumo Laser 60/80gsm	ECF TPV CN
Multipurpose 80gsm	PEFC ECF TPV
Sovereign Offset Digital 90/100/115/150/200gsm	ECF TPV
Sumo Silk 113/128/148/170/300/350gsm	ECF ISO 14001 CN
Digital Uncoated 100/120/160/200/250/300gsm	ISO 14001 PEFC TPV
Pro Digital Satin 200gsm	ECF ISO 14001
Silk High Gloss 300/350gsm	ECF TPV
Digital Uncoated Pro 350gsm	TCF TPV
Silk Matt (white) 256gsm	ECF TPV
Office Max Coloured Paper 80gsm	ECF TPV PEFC
Kaskad 250/320gsm	ECF PEFC
Mohawk Via I-Tone Felt 298gsm	ECF TPV
Burano Black 320gsm	ISO 14001 ECF
Prado Kraft 80gsm	ECF TPV
Eco100 Recycled 100 / 250 / 300gsm	PCF ISO 14001 NORDIC SWAN EU ECO
Eco100 High White 100 / 170 / 300gsm	PCF ISO 14001 EU ECO CN
Evergreen Environmental Birch 104 / 216gsm • Tortilla 118 / 216gsm	PCF TPV GREEN SEAL
Evadale Kraft 258gsm	PEFC

- CARBON NEUTRAL**
Carbon neutral describes products, operations and activities which have had their emissions calculated and reduced or offset.
- ECF - ELEMENTAL CHLORINE FREE**
Elemental Chlorine Free is pulp whitened without the use of chlorine gas.
- PCF - PROCESS CHLORINE FREE**
Process Chlorine Free paper is made from recycled fibre that has not been re-whitened with any chlorine based bleach.
- TCF - TOTALLY CHLORINE FREE**
Totally Chlorine Free paper is bleached without any chemicals containing chlorine, thereby avoiding the generation of organically bound chlorine in the pulp and waste water system.
- FROM RESPONSIBLE SOURCES**
Forests that are certified and audited to ensure they comply with environmentally sustainable practice and principles.
- THIRD PARTY VERIFIED**
Chain of custody is certified by a third party for the responsible management of the world's forests.
- ENVIRONMENTAL MANAGEMENT SYSTEM**
Indicates that the paper mill operates under an environmental management system to ensure compliance with regulations and environmentally responsible practises.
- ISO14001**
The International Organisation of Standards (ISO) promotes the development and implementation of international standards. ISO14001 has established environmental management systems to prevent pollution, ensure compliance with regulations and achieve continual improvement.
- PEFC**
Programme for the Endorsement of Forest Certification. This scheme is, by area, the world's largest forest certification system. Fulfilling the PEFC standard requires independent third-party verification which provides a credible link between responsible production and consumption of forest products.
- RECYCLED CONTENT**
Paper recycling is the process of turning waste paper in to new paper products, and therefore extending the life cycle.
- GREEN SEAL**
Green Seal is an American based independent organisation dedicated to promoting the manufacture, purchase, and use of environmentally responsible products and services.
- EU ECO-LABEL**
Helps to identify products and services that have a reduced impact on environment throughout their life cycle. Recognised as a label promoting environmental excellence
- NORDIC ECO-LABEL (NORDIC SWAN)**
The official sustainability eco-label for the Nordic countries. Criteria include environmental, quality and health, and promotes products and services that are environmentally sound.
- BLUE ANGEL**
Blue Angel Eco Label is a German certificate for products and services that have environmentally friendly aspects.
- ACID FREE**



ALL CQ'S PAPERS ARE CAREFULLY SOURCED AND RECYCLABLE.

IF YOU THINK A LITTLE TODAY, YOU CAN MAKE A BIG DIFFERENCE TOMORROW.

Plantation trees are purpose grown and are renewable. Paper is recyclable (70% of all paper in New Zealand is recycled), and because paper is made from a natural based product, it is biodegradable.

DID YOU KNOW

- Paper boasts exceptional environmental credentials: it is natural, biodegradable, recyclable, comes from an infinitely renewable resource, stores CO² and is produced in a sustainable manner.
- The paper, pulp and print sector is one of the lowest industrial emitters of greenhouse gas.
- Over a number of years, the United Nations 100 most "sustainable" industries list has included eight pulp and paper companies - the highest representation of any industry group worldwide.
- It's easier to learn on paper! Research shows that reading paper text is faster than reading text online and the reader retains more information!
- Paper is naturally biodegradable and does not generate polluting waste as it decomposes, unlike e-waste.

WE'RE SERIOUS ABOUT RESPONSIBLE BUSINESS

CQ Group Ltd is an environmentally responsible company whose commitment to conservation awareness and preservation is reflected through our organisation.

At CQ, we recognise our responsibility in helping to protect the environment in which we live and part of that is our ongoing commitment to the supply of paper based products with the highest environmental credentials available.

To help you with paper stock decisions we have produced this GREEN GUIDE for our product range so you can see at a glance which products meet which environmental standards and what those standards actually represent. As always, if you have any questions - please call or visit us instore.



03 963 8899 | info@cq.co.nz
103 Wrights Rd, Christchurch
PO Box 42142, Christchurch 8149

cq.co.nz

