

NEON YELLOW GUIDE

Applying the Colour Neon Yellow to Vector Artwork in InDesign and Prepared Raster Images in Adobe Photoshop.

This tutorial will explain and demonstrate how to create and apply a Neon Yellow Spot Colour in a Raster image for use within an InDesign file while using Neon vector elements in the layout.

In this example, we will be using a sports team's promotional folder. We will isolate the plain yellow within the InDesign layout, and the plain yellow in the images, replacing it with Neon Yellow.

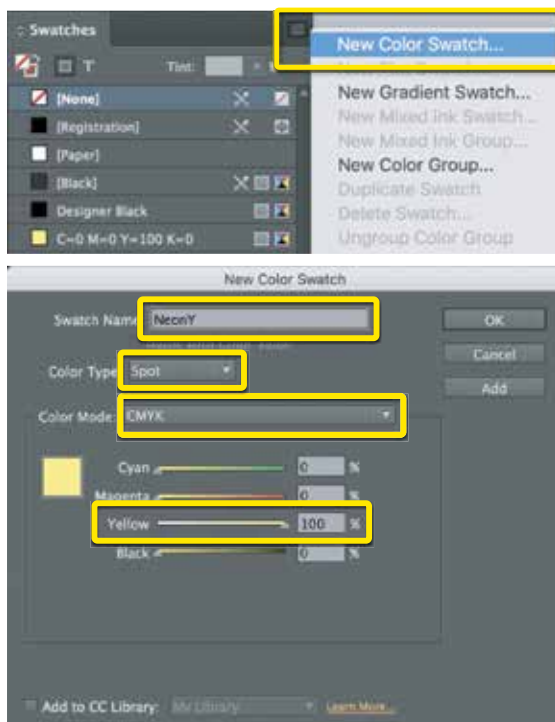
The images used will need to be prepared in Photoshop to carry the 5th Colour information into the layout.

1. Open or create the InDesign file you are looking to enhance with Neon Yellow Toner. In the featured file, we have a layout using a plain yellow design, that we want to update and print using Neon Yellow.

2. To begin, a new swatch is needed. Create a New Swatch by clicking the top right corner of the swatch palette, and select New Colour Swatch.

- Name the swatch NeonY.
- Select Spot Colour for Colour Type.
- Select CMYK for Colour Mode.
- It is recommended to choose 100% Yellow, to maintain a consistent look and feel of the overall design.

* Note: In this tutorial, we are changing plain yellow to Neon Yellow, but this will work for any colour or image you would like to convert.



3. The NeonY Spot Colour represents the Neon Yellow Toner

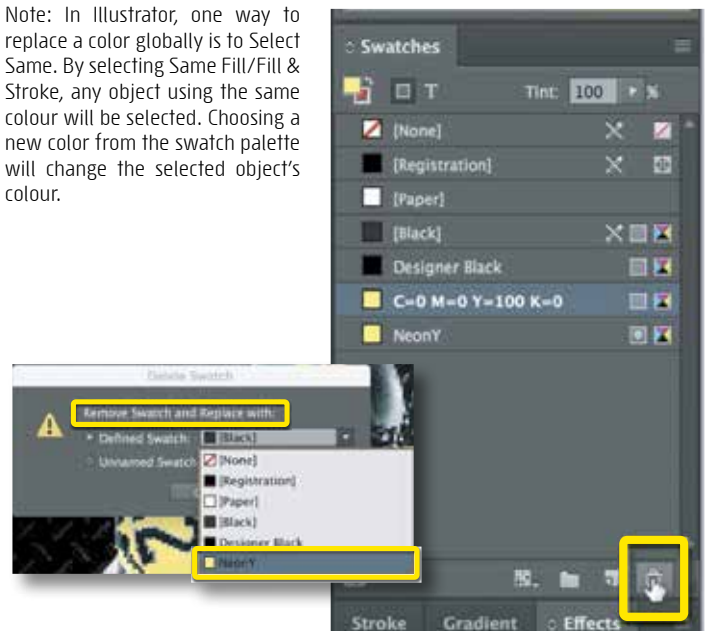
4. Using InDesign you can Remove and Replace a color swatch. Removing and replacing the swatch will allow ALL instances of the selected colour to be replaced. This way, you won't have to hunt down every object to confirm it is formatted correctly with Neon Yellow.



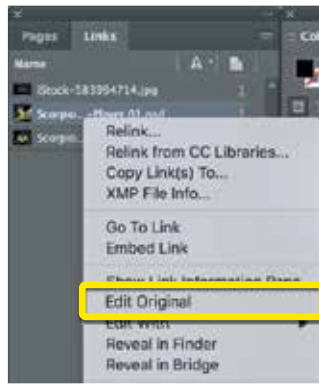
To replace the plain yellow with Neon Yellow globally:

- Select the swatch to be Removed and Replaced.
- Click on the 'Garbage-can' icon in the bottom right corner.
- When prompted to Remove Swatch and Replace with, select NeonY from the Defined Swatch drop-down menu.
- You will be left with Neon Yellow elements in your layout.

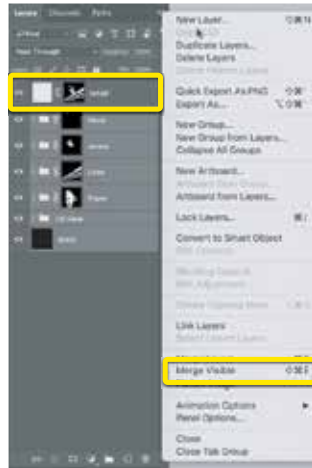
Note: In Illustrator, one way to replace a color globally is to Select Same. By selecting Same Fill/Fill & Stroke, any object using the same colour will be selected. Choosing a new color from the swatch palette will change the selected object's colour.



5. After the vector elements in the documents are updated, any image modifications will need to take place in Photoshop. To update your image, in the links tab, right-click and select Edit Original. This will take us into Photoshop, assuming it is the default image-editing program set to open the linked file.

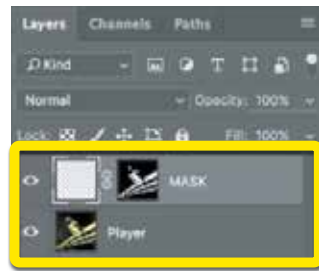


6. In Photoshop, you can see where the yellow has already been enhanced and masked, to make the image more impactful. An additional mask has been created to assist with area selection when moving colour specific information from channel to channel.

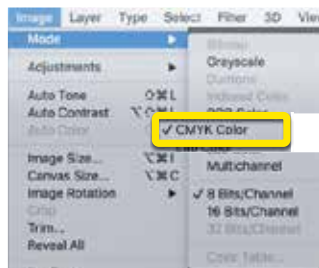


Once your image is ready, it is easier to manipulate a new Colour Channel when the image is merged into one layer—be sure not to merge the selection mask as well.

You should be left with one artwork layer and one mask layer.

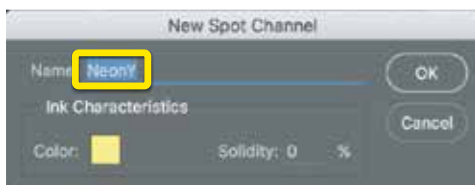
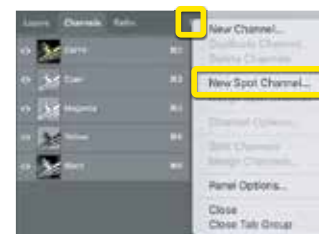


7. The next step is to make sure your file's colour mode is CMYK.



8. To create the new Neon Yellow Spot Channel:

- Find the Channels tab, right-click on the top right, and select New Spot Channel in the menu.
- When prompted, name the spot colour NeonY.
- You will notice that a new Colour Channel has been added to the list.



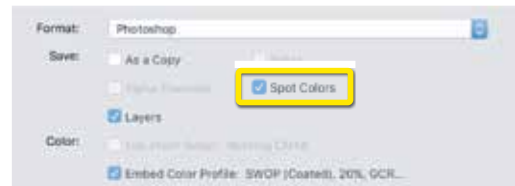
9. At this point, the color information needs to be relocated. Since we don't want to replace all of the yellow with Neon Yellow, we will use the mask saved in the layers tab to select specific information from the Yellow Channel.

To move the color information from the Yellow Channel to the Neon Yellow Channel:

- Select the mask, right-click, and choose Add Mask To Selection to select only the pixels you are looking to modify.
- Highlight the Yellow Channel, in the Channels tab, prior to cutting the information by clicking on it.
- Cut the information from the Yellow Channel.
- Then select the NeonY Channel and select Paste Special – Paste in Place from the Edit menu. This will place the information in the same spot, on the Neon Yellow Channel, retaining registration.



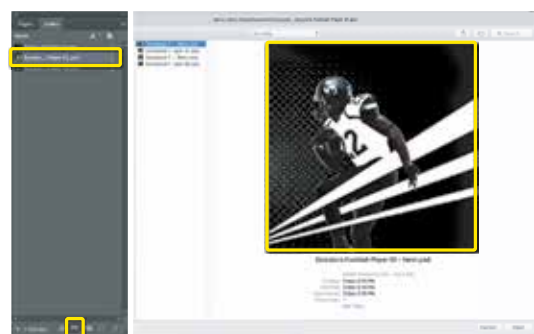
10. Save your new PSD, and be sure to check the Spot Colours box before saving.



11. Return to InDesign and update your link by clicking on the chain icon at the bottom of the Links tab to Relink the image. Don't worry if the preview doesn't show the NeonY Channel, trust that it is there.

For additional images, repeat steps 5-11.

Note: If using Illustrator, select the image in the layout, find the linked filename in the top left portion of your workspace, click on the filename, and select Relink.



12. With your Raster images updated and saved, and with your Vector elements using the new Spot Colour in the layout, you are ready to create a PDF.

Export your file as a PDF, File – Export, using the PDF Preset PDF/X-4:2008. This will allow Fiery® Command WorkStation to recognize where to apply the 5th Colour Neon Yellow Toner.

